

**PLUMTREE COTTAGE, CAT LANE, STADHAMPTON,
OXFORDSHIRE, OX44 7UN**

- Country Cottage
- Fully Managed by Davis Tate
- Pets Considered
- Unfurnished, Available June
- Good Access to M40
- EPC Rating D

£1,350 per month + permitted payments *

FOR AN APPOINTMENT TO VIEW PLEASE CONTACT THE GORING ON THAMES BRANCH ON 01491 873456



davistate.com

Abingdon-on-Thames | Goring-on-Thames | Henley-on-Thames | Pangbourne | Reading | Twyford | Woodley

Davis Tate is a trading name, independently owned and operated under licence from LSLi Limited, by EADTL Ltd (company number 04405992), registered in England at 5 Brooklands Place, Brooklands Road, Sale, Cheshire, United Kingdom, M33 3SD.



PROPERTY DESCRIPTION

A character country cottage with period features and wood burner, located at the end of a private road in Stadhampton. This freshly painted property has two reception rooms and two double bedrooms. Pets considered. Driveway and off road parking. EPC Rating D. Unfurnished, available June.

LOCAL INFORMATION

Stadhampton is a popular village well situated not only for Oxford City Centre (10 miles), but also for London, with Junction 7 of the M40 only 5 miles, and trains from Haddenham (10miles) to London (Marylebone approx 45 minutes) and Didcot (13 miles) to London (Paddington approx 45 minutes). Within the village there is a village shop, with mini-market and petrol station, two public houses and a parish Church. The village has a large village green which is surrounded by a number of Georgian houses and thatched properties. Stadhampton also has an excellent pub called The Crazy Bear, farm shop, tea room, Thai and English restaurants. The attractive market town of Wallingford is just 7 miles away offering excellent shopping and recreational facilities.



ACCOMMODATION

Accommodation comprises of the living room with wood burner, dining room, kitchen, downstairs bathroom, two double bedrooms with ornamental period fireplaces and internal storage.

OUTSIDE SPACE

Front and side garden with allocated parking.

LOCAL AUTHORITY and SERVICES

South Oxfordshire District Council. www.southoxon.gov.uk - Council Tax Band D - Mains gas, water and electric.

PET INFORMATION

A pet may be considered, subject to an increased rental amount per calendar month. Terms and conditions will apply.

IMPORTANT NOTICE

* When you apply for a tenancy there will be permitted payments to pay - ask our branch staff or visit our website for further details.



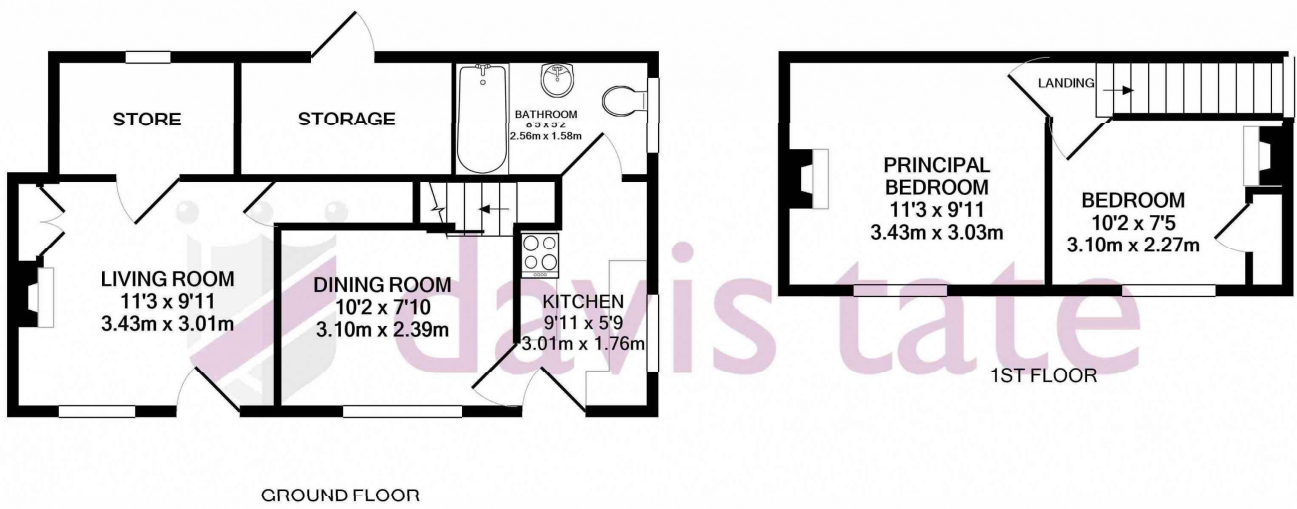
DISCLAIMER

These particulars are a general guide only. They do not form part of any contract. Services, systems and appliances have not been tested. Other important information which you need to know about this property can be found at davistate.com

REFERRAL FEES

We may refer you to recommended providers of ancillary services such as Conveyancing, Financial Services, Insurance and Surveying. We may receive a commission payment fee or other benefit (known as a referral fee) for recommending their services. You are not under any obligation to use the services of the recommended provider. The ancillary service provider may be an associated company of Davis Tate.





Measurements are approximate. Not to scale. Illustrative purposes only
 Made with Metropix ©2020